

CONDO SALE / LEASE

65 Thomas Johnson Dr.

Suite B | Frederick, MD 21702

|||||  
FREDERICK  
COMMERCIAL  
REAL ESTATE



Dental / Medical Office

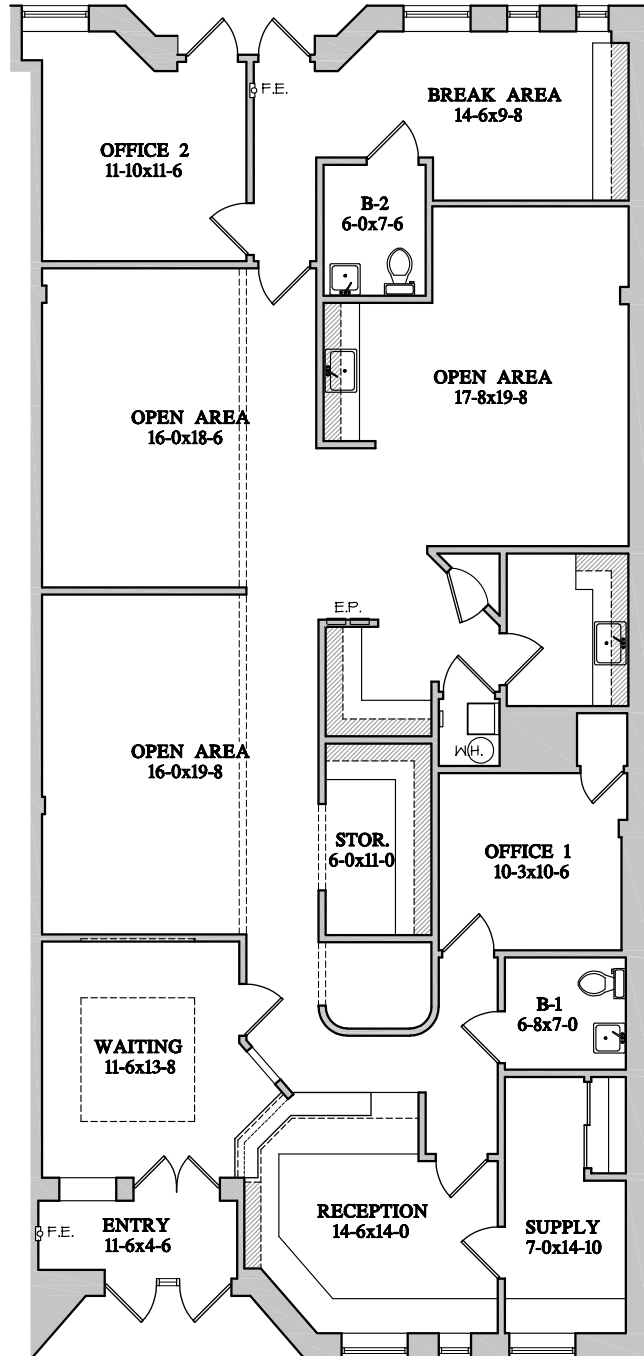
CHRIS KLINE JR. | BROKER OF RECORD

MOBILE 301.401.4106 | OFFICE 240.457.4802

ckline@FredCommercial.com | [www.Frederick-Commercial.com](http://www.Frederick-Commercial.com)

# 65 Thomas Johnson Dr.

## Suite B | Frederick, MD 21702



THOMAS JOHNSON DRIVE  
#65 - UNIT B  
APPROX. 2,740 SQ. FT.

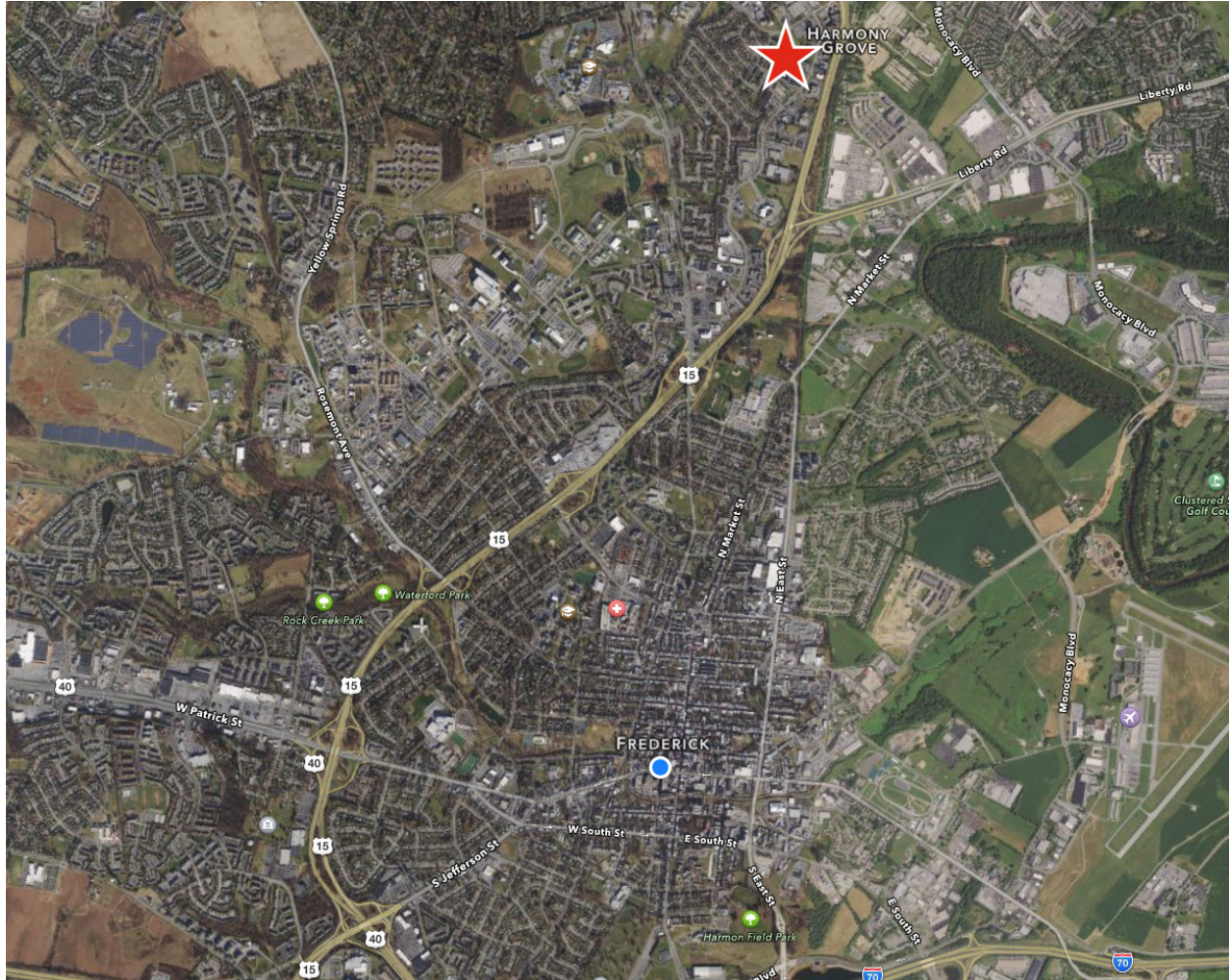
SCALE: NONE

CHRIS KLINE JR. | BROKER OF RECORD  
MOBILE 301.401.4106 | OFFICE 240.457.4802  
ckline@FredCommercial.com | www.Frederick-Commercial.com

FREDERICK  
COMMERCIAL  
REAL ESTATE

# 65 Thomas Johnson Dr.

## Suite B | Frederick, MD 21702



### PROPERTY OVERVIEW

2,700 sq. ft.  
Former dental practice  
Zoned: City of Frederick Professional  
Business  
Sales offering: \$599,000.00  
Lease offering: \$18.00 NNN per sq. ft.  
(NNN= \$4.75 per sq. ft.)

### FEATURES

Built out for former dental practice  
6 dental stations where plumbing, electric and air  
are stubbed in for each station  
Onsite parking  
Front and rear employee entrances  
2018 taxes \$6,180.60  
2018 condo fees \$6,624.00

CHRIS KLINE JR. | BROKER OF RECORD  
MOBILE 301.401.4106 | OFFICE 240.457.4802  
ckline@FredCommercial.com | www.Frederick-Commercial.com

  
FREDERICK  
COMMERCIAL  
REAL ESTATE

\*NOTE: THE STATEMENTS AND FIGURES CONTAINED HEREIN, WHILE NOT GUARANTEED, ARE SECURED FROM SOURCES WE BELIEVE AUTHORITATIVE.